





Your Life's Work is Our Sole Mission

DRIVEN BY PURPOSE

MAKE A BIG IMPACT—
START WITH RSNA MEMBERSHIP

EMPOWERING
EDUCATION

GROUNDBREAKING
RESEARCH

CONNECTED
COMMUNITY

JOIN TODAY. >>> [RSNA.ORG/JOIN](https://rsna.org/join)

DRIVEN BY PURPOSE

Together, We Are Radiology.

JOIN TODAY

300X600

PRINT AD

POSTCARD

DRIVEN BY PURPOSE

RSNA
Together, We Are Radiology.

DRIVEN BY PURPOSE

Your Life's Work is Our Sole Mission

BE A MEMBER

RSNA
Together, We Are Radiology.

INSPIRED BY A PASSION FOR SCIENCE

Build Big Ideas,
Advance the Field

BE A MEMBER

RSNA
Together, We Are Radiology.

CONNECTED BY COMMUNITY

Sharing a Passion for
Patient Care

BE A MEMBER

RSNA
Together, We Are Radiology.

EMPOWERED BY EDUCATION

Better Your Future,
Better the World

BE A MEMBER





Six World-Class Journals to Guide Your Practice

The Research You Need to Stay Ahead

RSNA Journals
Together, We Are Radiology.

Stay at the forefront of patient care with RSNA journals, offering you ground-breaking research year-round, right at your fingertips.

As an RSNA member, you enjoy unlimited access to cutting-edge research and opportunities to submit your work for publication, sharing knowledge that advances the field.

[RSNA.org/LeadingJournals](https://www.rsna.org/LeadingJournals)

STAY GREEN DURING RSNA 2024

By incorporating small, thoughtful changes into your routine, you can help reduce your environmental impact and embrace sustainable practices during RSNA.

Your actions as a meeting attendee can make a significant difference in reducing our environmental footprint. Here's how you can help:



Use the recycling bins throughout McCormick Place. Behind-the-scenes, McCormick Place uses "Oscar," an AI-powered smart recycling assistant, to ensure waste is properly sorted.



Bring a reusable water bottle or purchase one at the RSNA Shop. Use the EZH2O filling stations and hydration stations around the convention center.



Join the RSNA Health Equity Committee's community service event on Tuesday, Dec. 3, to support Cradles to Crayons by assembling cold-weather kits for children in need.



Turn off unnecessary electronics in your hotel room and participate in the hotel linen and towel reuse program.



Support your health & well-being: participate in the 5K Fun Run, relax in the Zen Zone or visit the Meditation/Prayer Room.



Carpool, use rideshares or take public transportation to get around Chicago.



Use RSNA's complimentary shuttle buses, which have reduced emissions and limit idling, or opt for the free Metra train.



Carry the RSNA 2024 meeting bag made from recycled plastic bottles.



Shop at local businesses and dine at Chicago-based restaurants.

Stop by the Concierge desk on Level 2.5 of the South Building for reservation assistance.

By making small changes, you can help RSNA create an eco-friendly meeting experience. Learn more at [RSNA.org/MeetingSustainability](https://www.rsna.org/MeetingSustainability).



Connect To The Future of Radiology

RSNA 2024: *Building Intelligent Connections* highlights the way that collaborative, intelligent connections between people and technology will raise the profile of radiology and redefine how we deliver care.

Technical Exhibits

408,600
Square feet of technical exhibits

693
Exhibitors

110
First-time exhibitors

Program Content

868 Scientific papers **314** Educational courses

1,761 Scientific posters **7** Plenary sessions

1,548 Education exhibits **118** Quality Improvement Reports

Technical Exhibits
Social Events

Exhibit Hall Happy Hour
Exhibit Tours

Special Focus Technical Exhibits

3D Printing & Mixed Reality Showcase
Educators Row
One Day Showcase
Recruiters Row

AI Showcase, including the AI Theater and Radiology Reimagined: *AI, innovation and interoperability*
First-Time Exhibitor Pavilion

Hot Topics

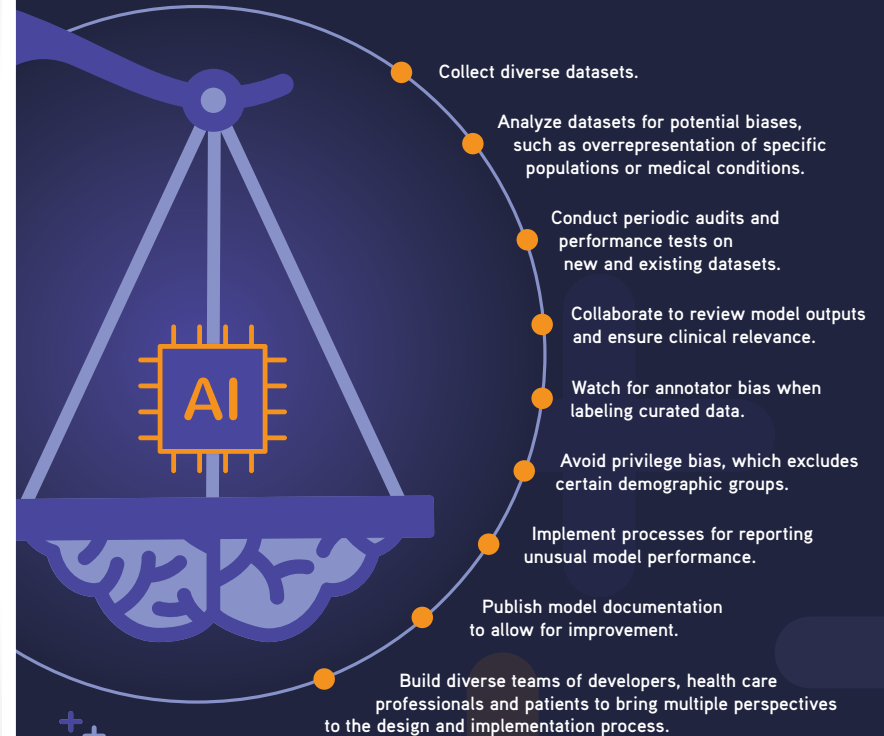
Low-field and mobile MRI	Value-based, equitable and sustainable radiology
Theranostics	
Precision health care	Multiomic and multicenter radiology AI
DEI and health equity	

Industry Presentations

Corporate Symposia	Lunch & Learns
Innovation Theater	AI Theater
Virtual Industry Presentations	Vendor Workshops
	Center Stage Presentations

MITIGATING BIAS IN AI FOR IMAGING

Addressing AI bias in imaging effectively enhances trust in AI and improves outcomes for all patient groups. Here are some steps to take:



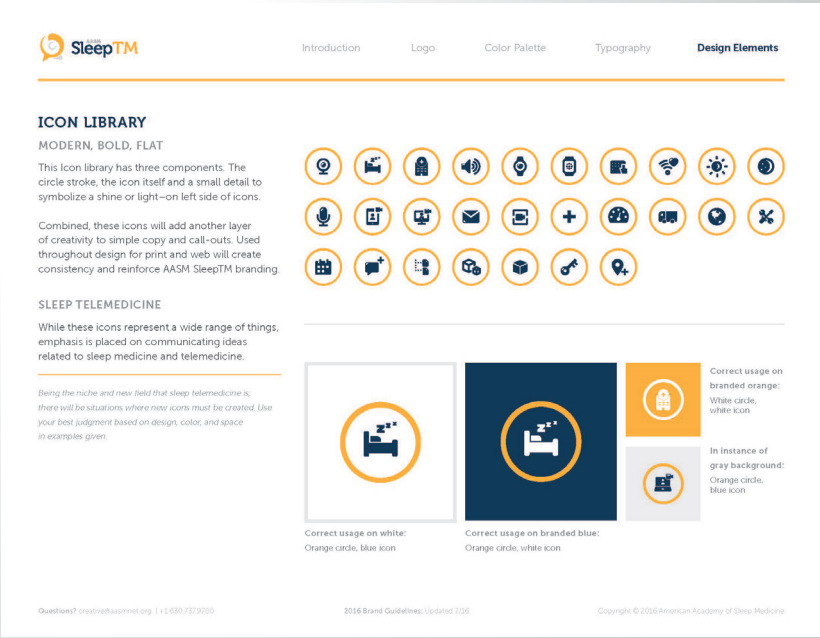
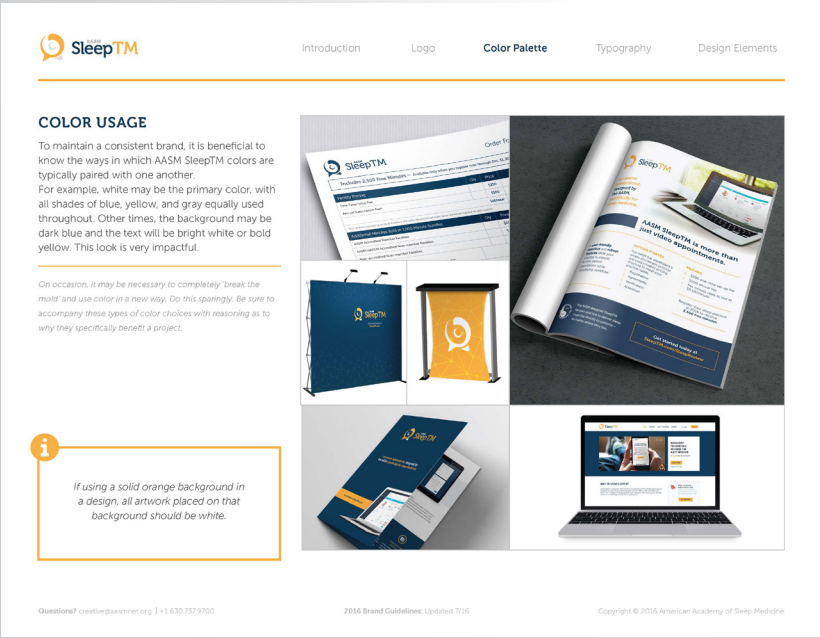
Source: RadioGraphics





When the sun sets and the moon rises, this is where our journey begins.







Project Type Welltrinsic web interface

THE 29TH ANNUAL MEETING OF THE ASSOCIATED PROFESSIONAL SLEEP SOCIETIES, LLC
 WASHINGTON STATE CONVENTION CENTER

A JOINT MEETING OF THE



AND



Sleep Research Society*

SLEEP 2015

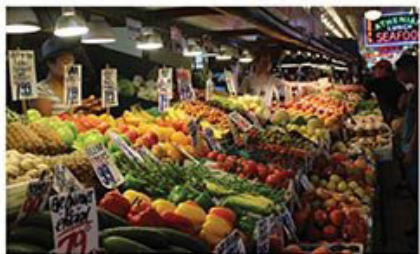
SEATTLE · JUNE 6-10



KEYNOTE SPEAKERS

Daniel Buysse, MD
Where in the Brain is Insomnia? How in the World Should We Treat It?

Masashi Yanagisawa, MD, PhD
Toward Solving the Mystery of Sleep: From Reverse Genetics to Forward Genetics in Mice




SLEEP 2016

DENVER · JUNE 11-15

30th ANNIVERSARY MEETING OF THE ASSOCIATED PROFESSIONAL SLEEP SOCIETIES, LLC

A JOINT MEETING OF THE



AND THE



Sleep Research Society*

KEYNOTE ADDRESS: Russell Foster, PhD
Light, Sleep and Clocks: Neuroscience to Therapeutics

Photo credits: courtesy of Steve Courteau, Steve Hollingsworth and Jeff Robinson


SLEEP 2017

BOSTON · JUNE 3-7


KEYNOTE LECTURE: H. CRAIG HELLER, PHD
Interactions between Sleep and Circadian Rhythms in Health and Disease

31st Annual Meeting of the Associated Professional Sleep Societies, LLC (APSS)

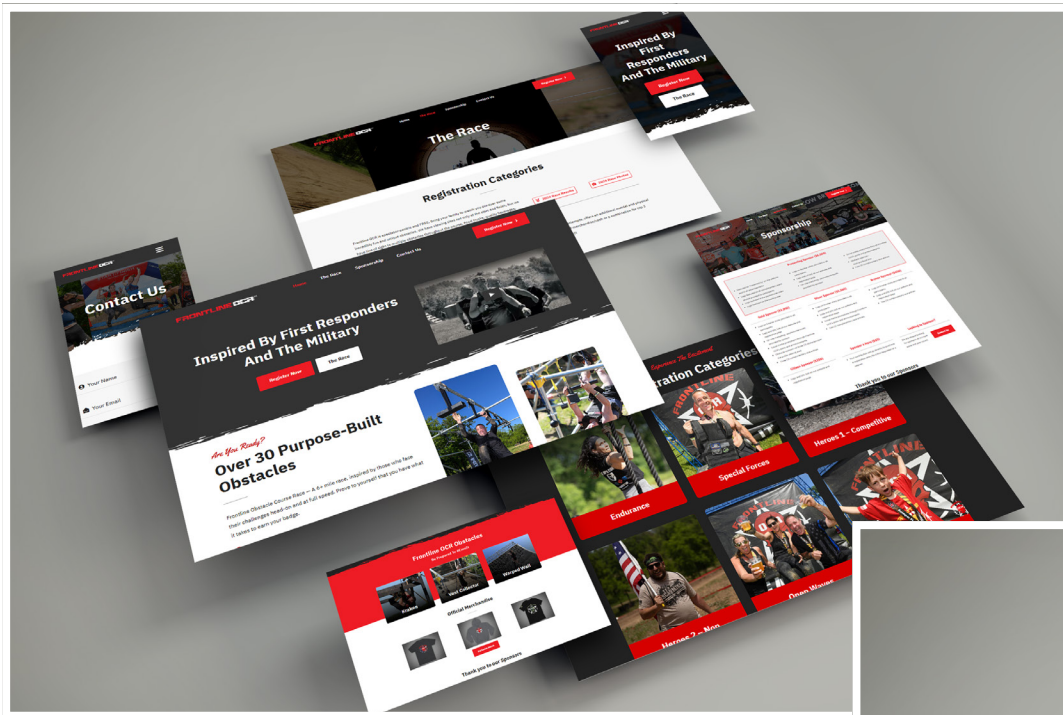
A JOINT MEETING



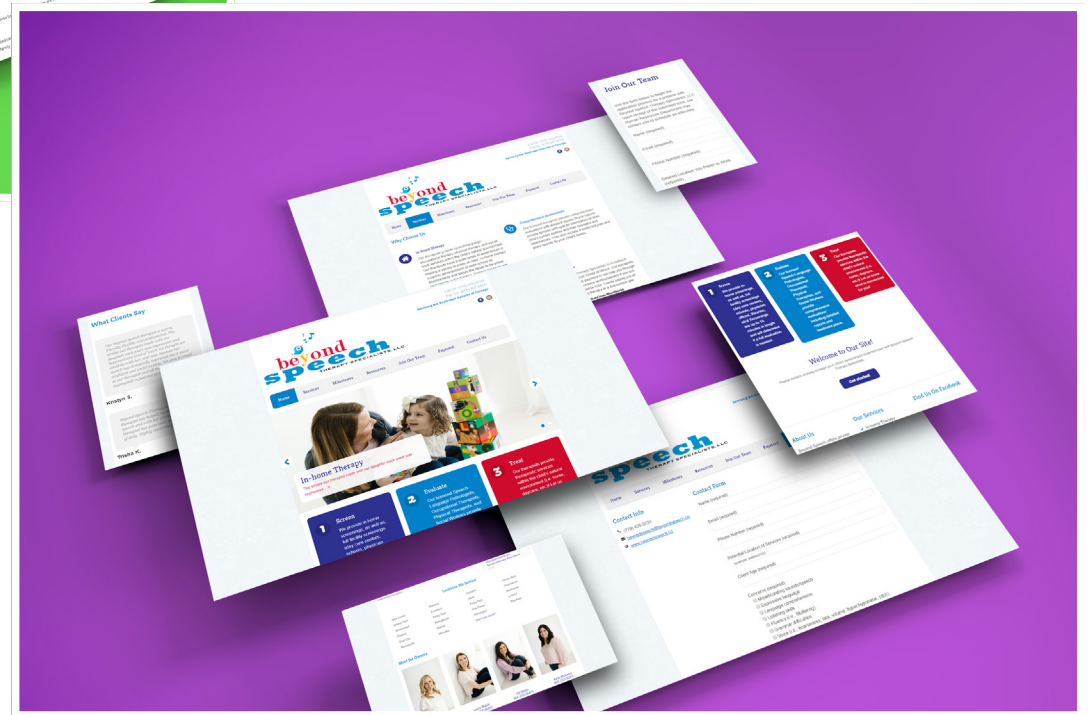
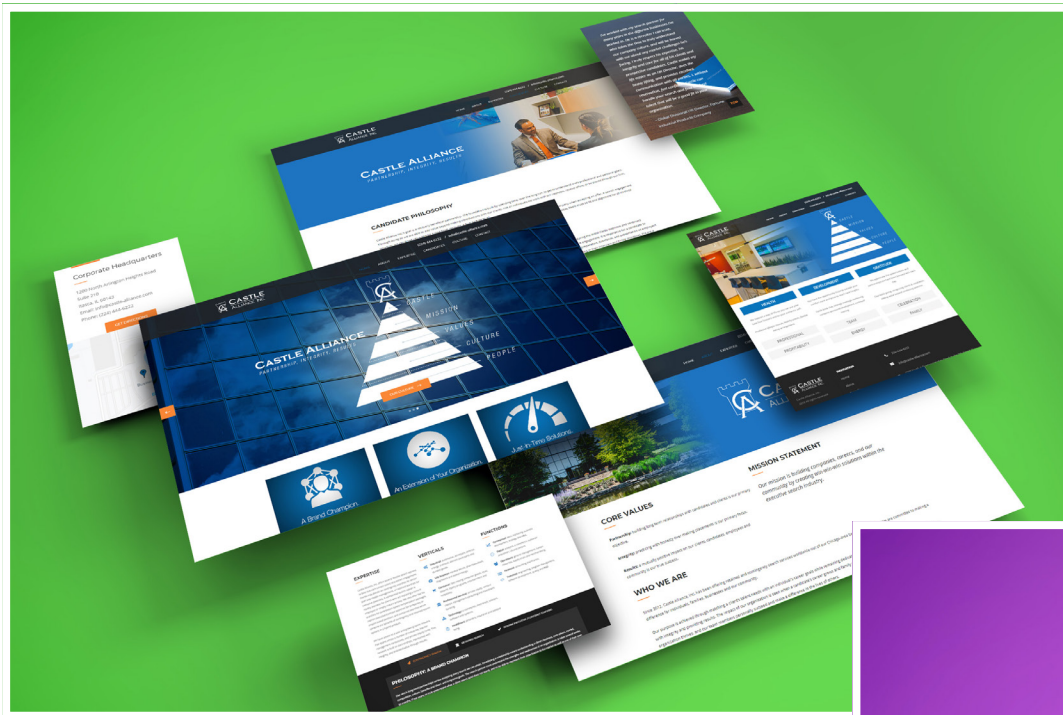
AND THE



Sleep Research Society*



Project Type **Web Design**



Project Type **Web Design**



Derek Claussen

Phone **815-272-4811**

Email **derekclaussen@gmail.com**

Web **derekclaussen.com**